

PDD10-48S Series

10 Watt Single Output

Features

- Approved to IEC/EN60950, UL60950 safety standards
- Industry standard footprint:
2" x 1" x 0.4" (50.80 x 25.40 x 10.16mm³)
- Typical efficiency: 81%
- Wide input voltage: 36-75V
- Single output: 3.3V, 5V, 12V, 15V
- Trim function; Remote control
- No minimum load requirement
- Output over-current protection (for 3.3V, 5V)
- Output short-circuit protection (for 3.3V, 5V)
- Isolation voltage: 1500Vdc, 1min (Input-Output; Input-Case; Output-Case)

Environmental

- Operating ambient temperature range:
-40 to 55
- Operating case temperature range:
-40 to 100
- Storage temperature:
-55 to 125
- Temp.coefficient:
$\pm 0.02\%/$
- MTBF:
>2 million hrs

Electrical Specifications

Input

Input range: 36-75Vdc

Output

Voltage setpoint accuracy: $\pm 1.0\%V_o$ max.
Voltage adjust: 90% to 110% V_o
Line regulation: 0.2% V_o max.
Load regulation: 0.5% V_o max.
Short-circuit protection: continuous, auto-recovery
Over-current protection: >120% I_o , auto-recovery
Ripple and noise: <math>< 100\text{mVpp}</math> max.
Transient response: 200mV max.
recovery <math>< 200\mu\text{S}</math> max.
(25% step load change from 50% I_o)
 di/dt : 1A/10 μS

Control

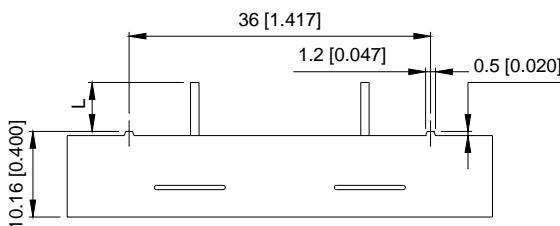
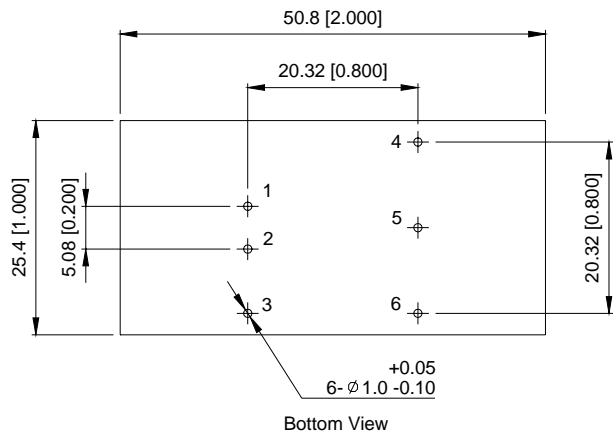
Control voltage:
Positive logic
High =on 3.5 to 10Vdc
Low =off -0.7 to 0.8Vdc
Negative logic
Low =on -0.7 to 0.8Vdc
High =off 3.5 to 10Vdc
Control current: 2mA max. (for positive logic)
4mA max. (for negative logic)



Ordering Information

Input Voltage	Output Voltage	Output Current	Efficiency	Model Number
48V	3.3V	3A	77%	PDD10-48S3V3
48V	5V	2A	81%	PDD10-48S05
48V	12V	0.83A	83%	PDD10-48S12
48V	15V	0.67A	84%	PDD10-48S15

Dimensions



TOLERANCES: X.Xmm=+/-0.5mm
X.XXmm=+/-0.25mm

Unit:mm[inch]

Notes: The detail and recommended hole pattern layout is available in the Application Manual.

Pin Assignments

1	+Vin
2	-Vin
3	CNT
4	+Vo
5	TRIM
6	COM

Pin Length: 5.8mm